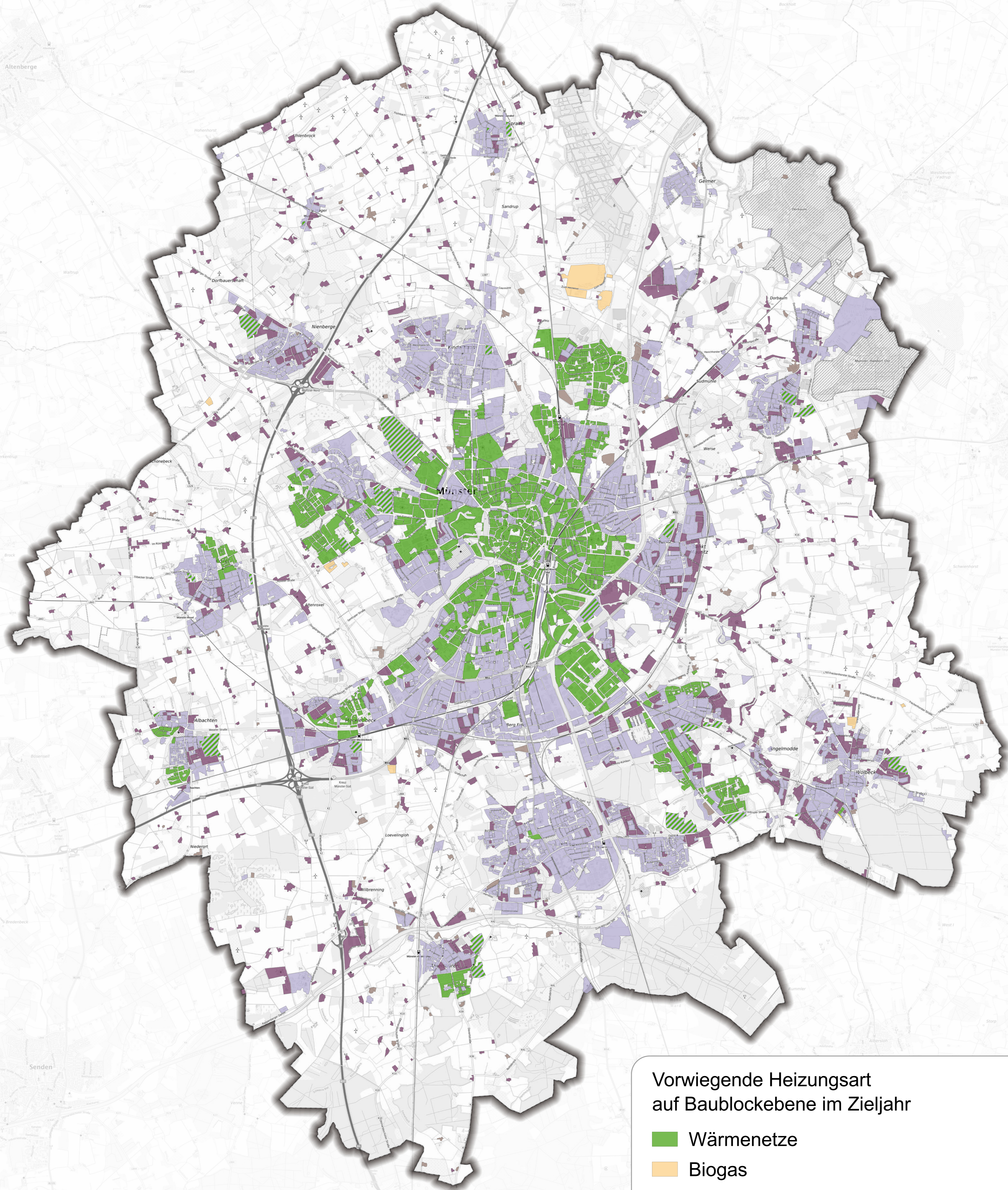
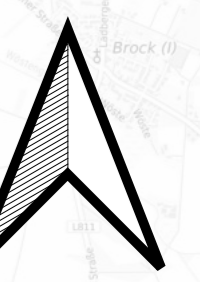










Kommunale Wärmeplanung in Münster

Vorwiegende Heizungsart im Zieljahr 2045



Vorwiegende Heizungsart
auf Baublockebene im Zieljahr

-  Wärmenetze
-  Biogas
-  Wasserstoff
-  Biomasse
-  Erd-Wärmepumpe
-  Luft-Wärmepumpe
-  unbeheizt
-  potenzielle Neubaugebiete
(Wärmenetzprüfung)

0 1 2 km

Basiskarte: (C) openstreetmap